

## Street Level – Ground Floor

### Description – Akakura Lodge

The lodge was extensively renovated in the last 12 months. The lodge retains elements of its Japanese charm (an onsen, tatami mats, sochi screens), whilst also introducing modern expectations of international guests (new western bedding, private bathrooms).

More broadly, new wall linings, new windows, new furniture throughout ensures all the creature comforts one would expect of a lodge of this size.

As a family of passionate skiers, we hope our own dreams and aspirations meet that of fellow ski enthusiasts.

In terms of access to the mountains, less than 200m walk / ski to the main trail, where you ski down to the chairlift in the morning, first lifts at 8.30am.

It's also 200m walk down to the high street for restaurants, bars, supermarket, convenience stores. A must is the pancake dessert.

- Hanging Rail
- Boot Rack
- Heater
- Bench
- Shelves

- Paint
- Flooring

- Bench
- Heater



## Level 1 – Design & Inventory

### Entry Lobby

### Dining Room

- Leather Seating for 12 at a custom designed and locally sourced dining table
- Retreat space

### Lounge

- New feature lounge for guests to relax
- Second lounge setting in low Japanese setting with low stools for games

### Kitchen

- Commercial grade kitchen to cater for 12+

### Theatre

- TV unit / TV – 65"
- Lounge
- Coffee Table

### Onsen 1 (fully renovated)

- Private 1-2 person natural onsen with shower for authentic Japanese experience

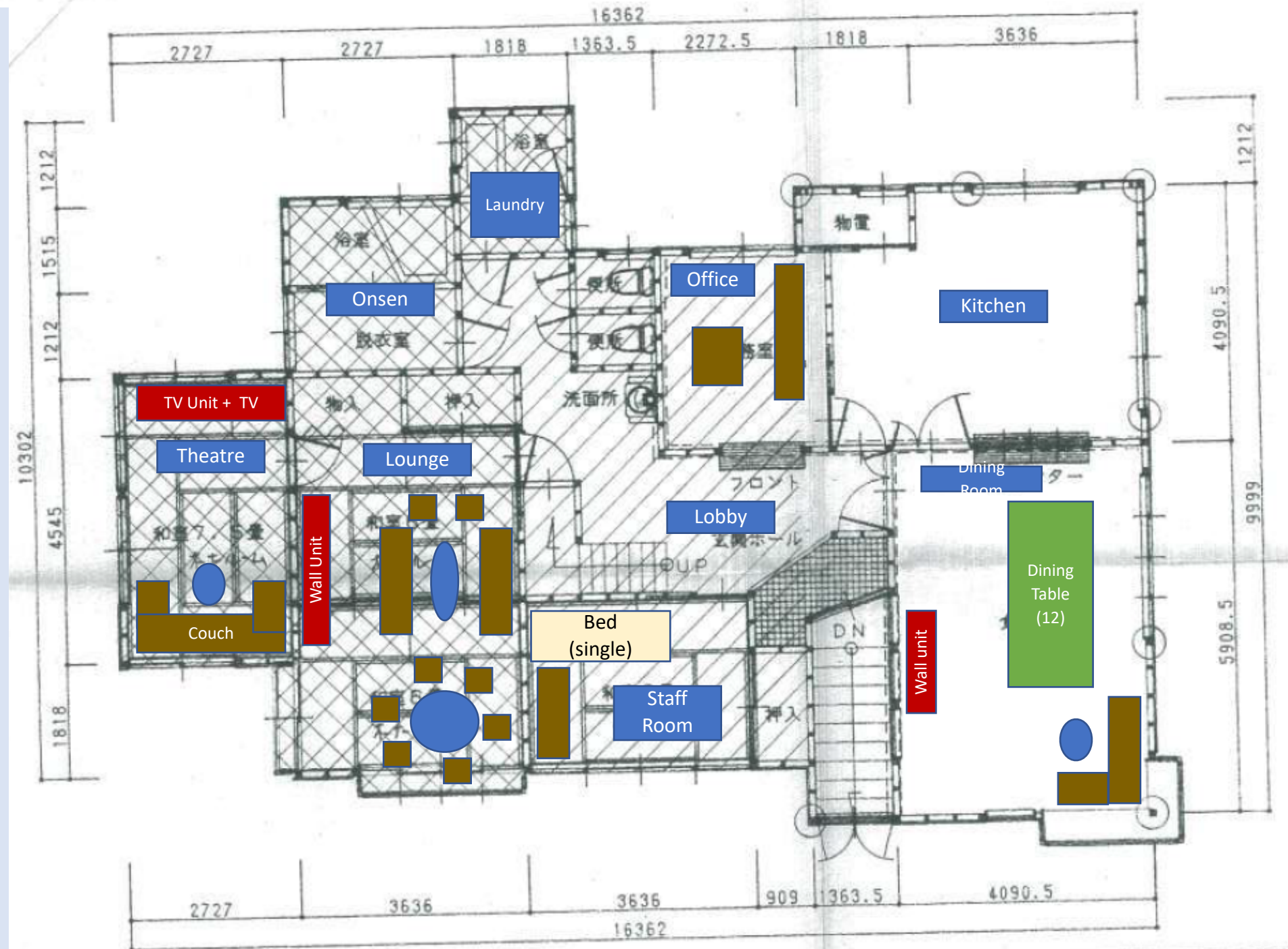
### WC – x 2

### Laundry

- Washing Machine & Dryer

### Helper Room

### Office





## Design & Inventory

### Bedrooms (new beds, pillows, linen)

- 3 Double Rooms
- 3 twin Rooms
- All with heating

### Bathrooms (new as part of renovation)

- 2 bathrooms with toilet, shower, vanity and mirror
- 3 external basins with mirror

